

## Chevy Chase Open Space Urban Park Update

Last summer, the Village made its final payment toward the acquisition of the Chevy Chase Open Space property located at the far southwest corner of the Village between Grove Street and Western Avenue. This was yet another step in a process that began over 11 years ago when then Chevy Chase Village Board Member Susie Eig (of West Kirke Street) identified this property as a critical open space within the County. Ms. Eig, who at the time also sat on the Legacy Open (LOS) Advisory Group, recommended to her fellow LOS Advisory Group members that the property should be included in the LOS Functional Master Plan for acquisition as an Urban Open Space. LOS funds are designated for the acquisition of properties within the County, which are then developed and maintained as a variety of open spaces for the public's use.

This 1.9-acre property, while titled to Montgomery County, is operated and maintained as a public park by the Maryland-National Capital Park and Planning Commission's Montgomery Department of Parks. The Village is a financial partner with the Commission and Montgomery County due to our contribution toward the purchase of the property. M-NCPPC Montgomery Parks staff are moving forward actively with studying Chevy Chase Open Space and implementing an initial site cleanup to improve the safety and usefulness of the site as public parkland. A Tree and Shrub Survey of the site has just been completed (please see the site plan, located on the reverse; a more complete version is available on the Village's website) with the help of Parks arborists and horticulture specialists from Brookside Gardens (located in Wheaton). That survey has identified several trees and many shrubs that will need to be removed this spring to meet several goals:

- improve visibility and safety in the park
- remove undesirable and invasive plant species per M-NCPPC Parks policy
- remove dead, dying and hazardous trees and tree limbs

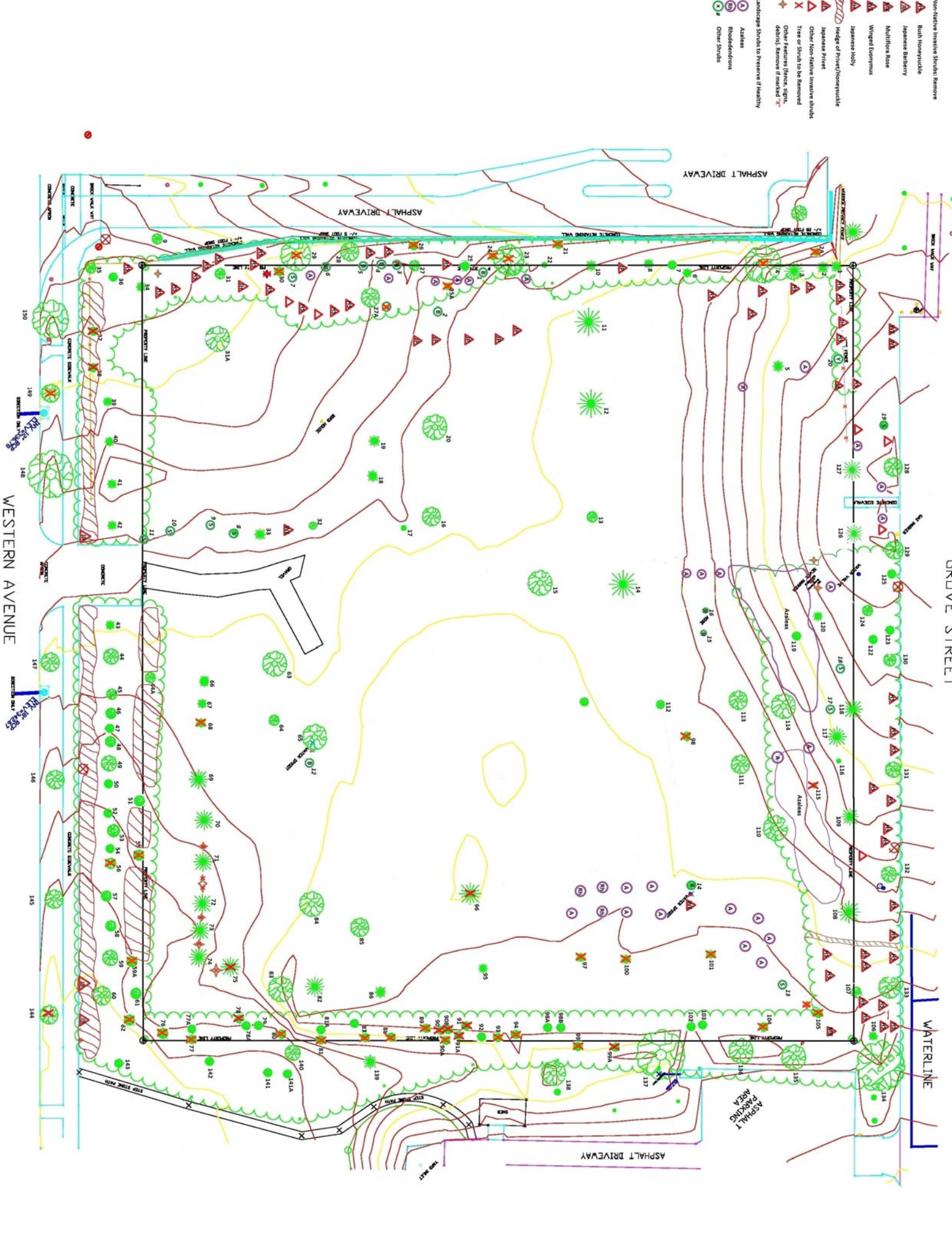
You may see Parks staff and contractors on the site during the coming months implementing these cleanup plans. Please be assured that only the minimum vegetation necessary to meet the above goals will be removed and that Park staff is working to improve visibility and safety in the Park while preserving the majority of the beautiful plants across the park. .

Once this initial site cleanup is completed, Montgomery Parks staff and the community will have a much better picture of the healthy vegetation that we have to work with as we develop a long-term Concept Plan and an interim improvement and planting plan for the park. The existing vegetative structure of the Park will be a great asset as we work collaboratively on a vision for this urban park. Please keep your eyes open for notice of an initial public workshop in early summer for a chance to voice your input on the vision for Chevy Chase Open Space.

This yet unscheduled initial meeting will be the first step in a community-wide process to develop this park into a real asset for the community. . At the Village Board's regular meeting on April 11, Legacy Open Space Program Manager Brenda Sandberg requested that the Village establish a small committee of citizens to serve as a liaison between the Village and the Commission as we work through this Concept Plan process and beyond. Other municipalities have established such committees when partnering with M-NCPPC on parks in their jurisdictions and they have been very helpful in streamlining the collaboration process. Included in this 5-person Committee will be Village staff liaison Michael Younes. If you are interested in serving on this Committee, please contact Mr. Younes by Friday, May 13 at [michael.younes@montgomerycountymd.gov](mailto:michael.younes@montgomerycountymd.gov) or (301) 654-7300.

If you have any questions or concerns, please contact Brenda Sandberg, Legacy Open Space Program Manager, Montgomery Parks, at [brenda.sandberg@montgomeryparks.org](mailto:brenda.sandberg@montgomeryparks.org) or 301-650-4360. For more information, please visit the Village's website at [www.chevychasevillagemd.gov](http://www.chevychasevillagemd.gov), and click on the "Chevy Chase Open Space" *Quick Link*.

- ▲ Non-native Invasive Shrubs: Remove
- ▲ Bush Honeysuckle
- ▲ Japanese Barberry
- ▲ Multiflora Rose
- ▲ Winged Euonymus
- ▲ Japanese Holly
- ▲ Hedge of Privet/Honeysuckle
- ▲ Japanese Privet
- ▲ Other Non-native Invasive Shrubs
- ▲ Tree or Shrub to be Removed
- ▲ Other Feature (fence, sign, debris): Remove if marked "X"
- ▲ Landscaping Shrubs to Preserve if Healthy
- Azeleas
- Rhododendrons
- Other Shrubs



GROVE STREET

WESTERN AVENUE

WATERLINE

ASPHALT DRIVEWAY

ASPHALT DRIVEWAY

ASPHALT DRIVEWAY

ASPHALT PARKING AREA

150  
149  
148  
147  
146  
145  
144

128  
129  
130  
131  
132  
133  
134  
135  
136  
137  
138  
139  
140  
141  
142  
143  
144  
145